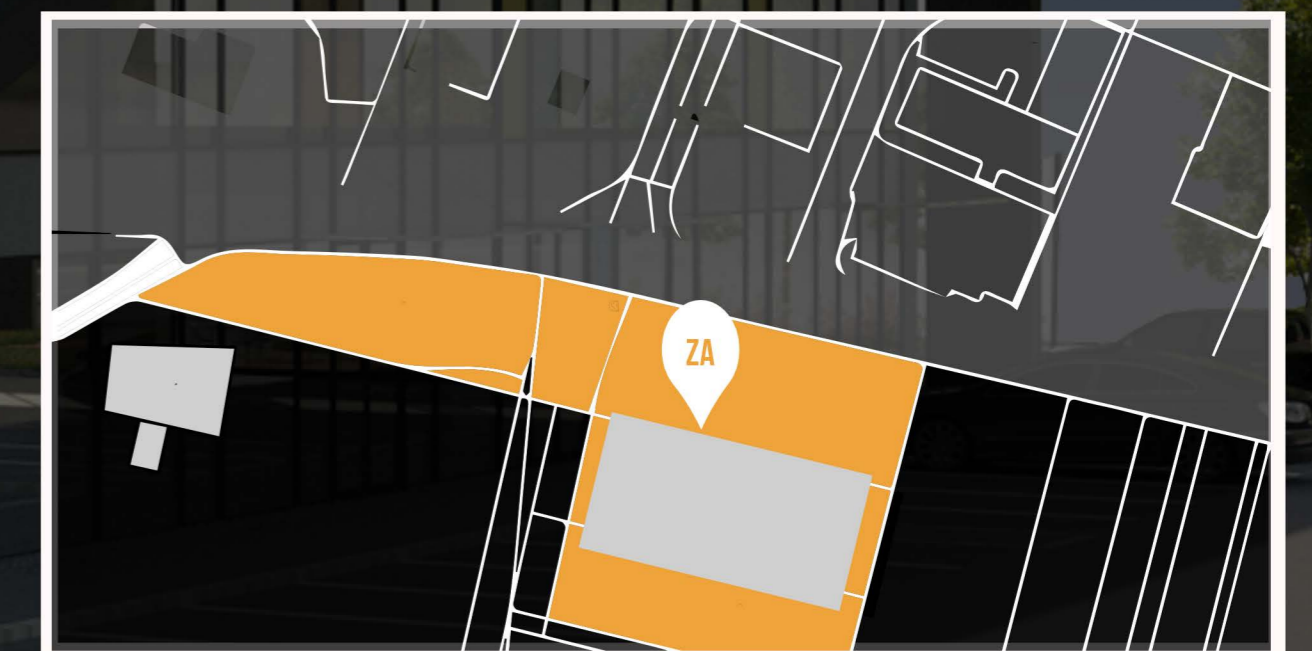


ANTRACIT SPOT

DEVELOPMENT PROJECT

Bytčianska 499/130
010 03 Žilina
Slovakia

WWW.ANTRACITPROPERTY.EU

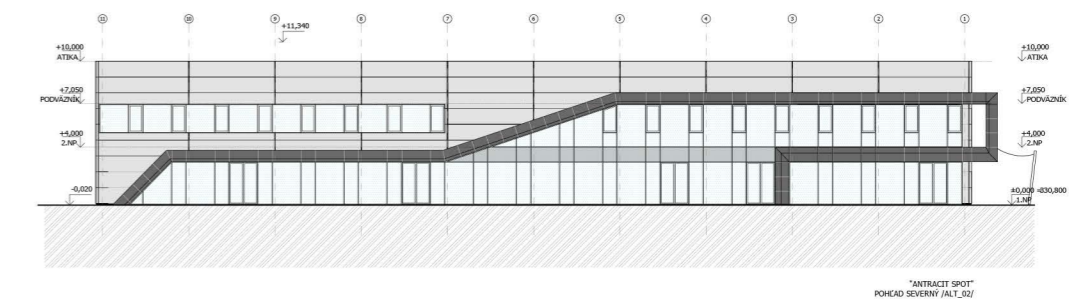
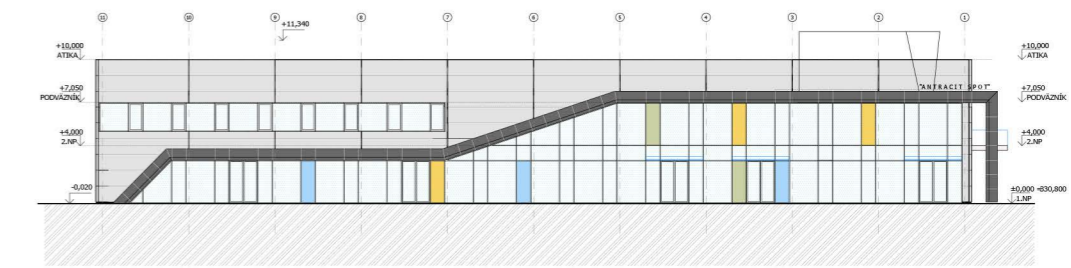
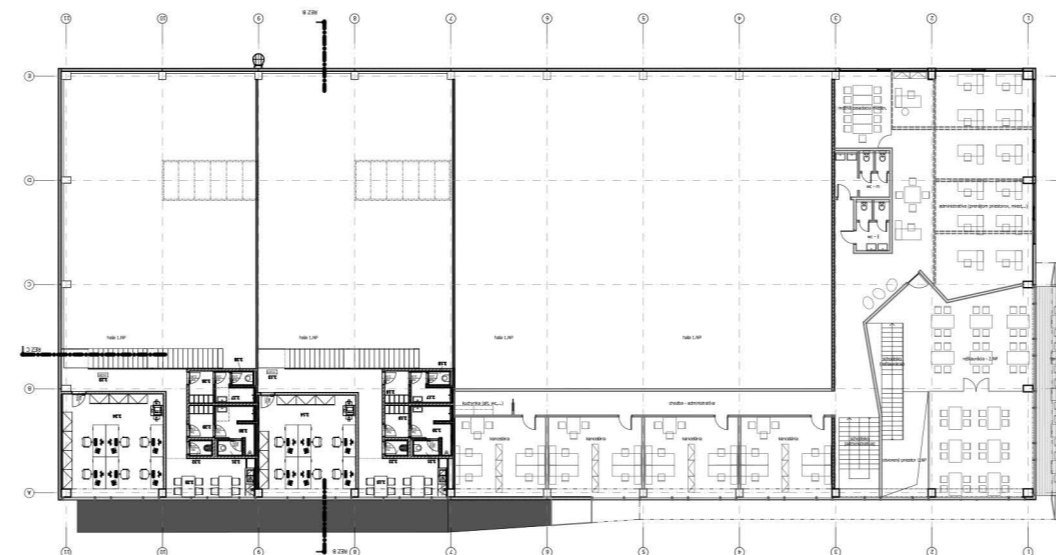
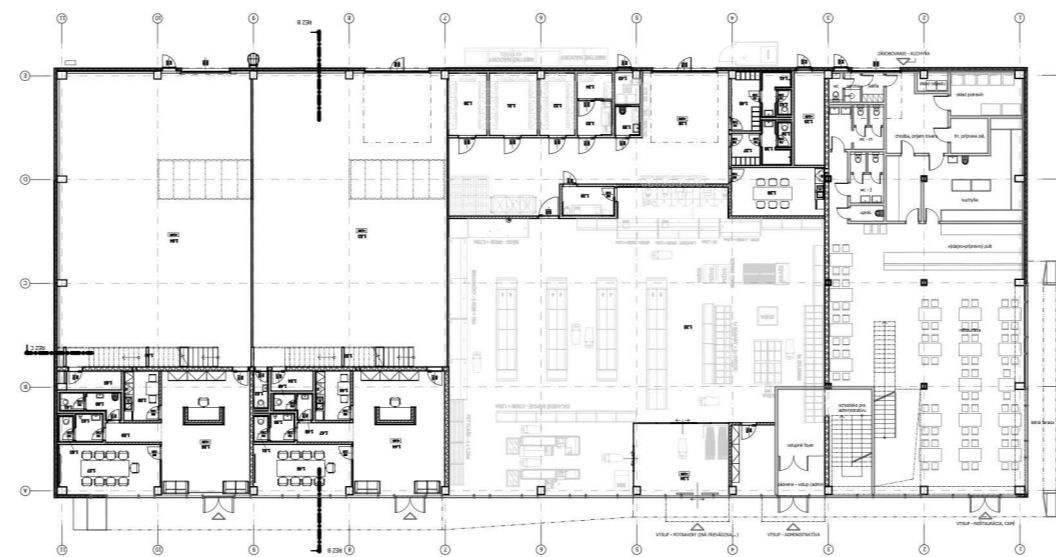




ABOUT PROJECT

The new development project ANTRACIT Spot is located opposite the already existing ANTRACIT Point building in Žilina. ANTRACIT Spot offers you premises for rent for your company for the purpose of using warehouses, showrooms, stores, or modern city logistics. With its attractive location in the city of Žilina - Považský Chlmec, only 7 km from the city center, it offers you excellent access to the main routes of the city bypass, as well as excellent access to the D3 motorway.

VISUALS



AREA

The building with its total area of 1,700 m² is suitable for use with smaller rental units with an area according to individual needs. The area and number of parking spaces is sufficient for both employees and customers.

Due to location in a territory that is suitable for civil amenities, there is the possibility of establishing gastronomic establishments in the building, commercial establishments covering the strong catchment area of the city of Žilina. At the same time, the building is in close proximity and very good visibility from the main road.