

ANTRACIT ŽILINA

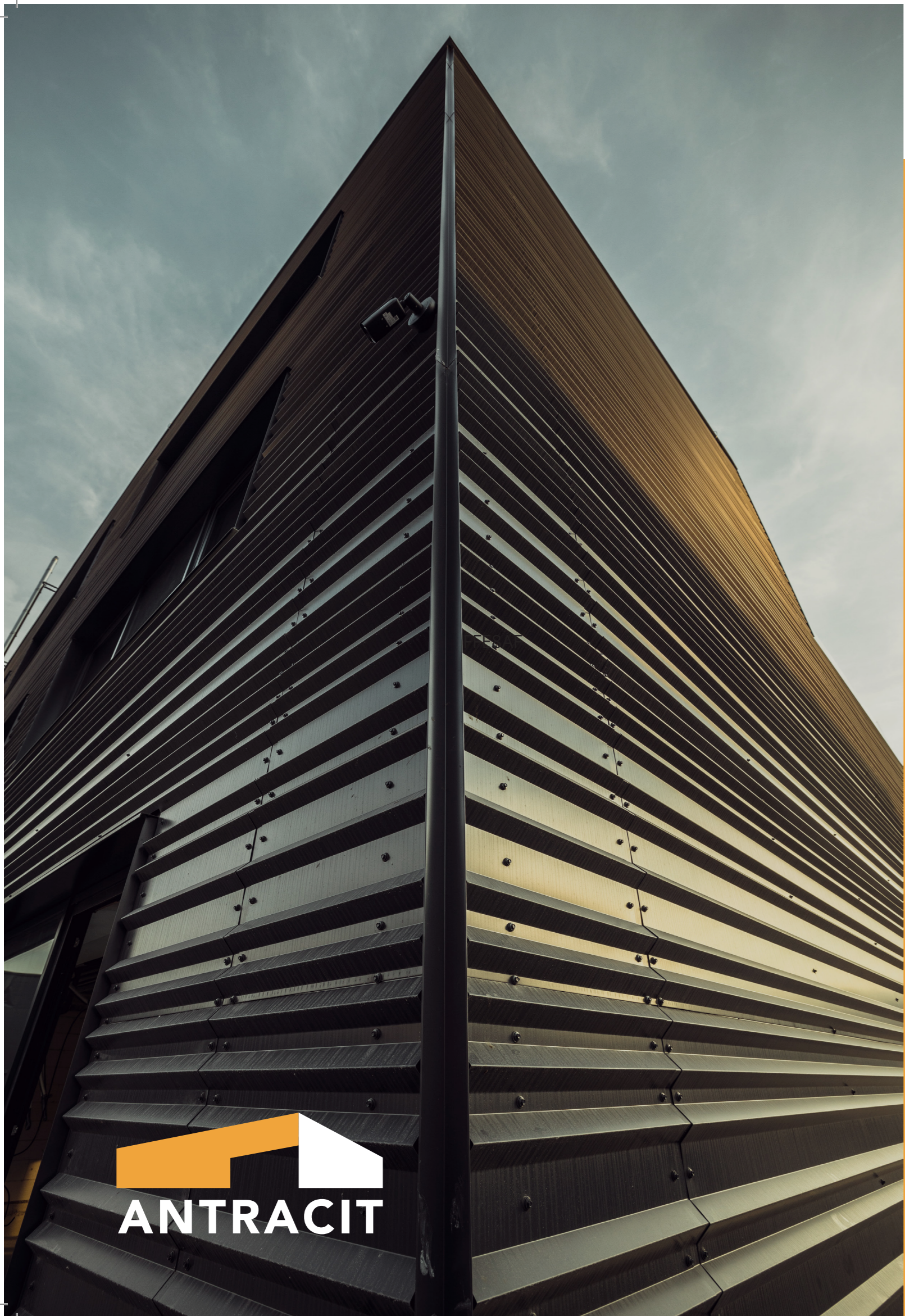
DEVELOPMENT PROJECT

Bytčianska cesta 499/130
010 03 Žilina
Slovensko

WWW.ANTRACIT.SK



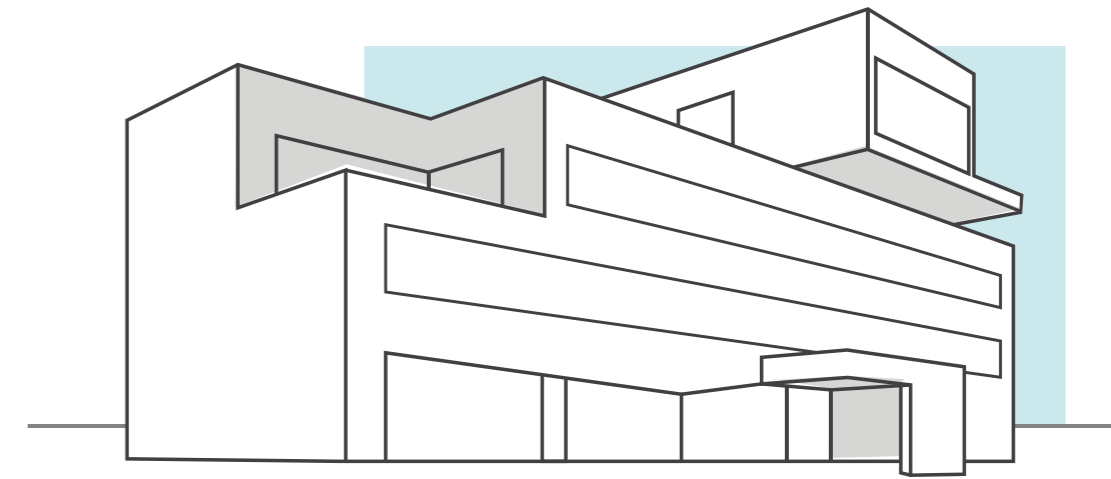
ANTRACIT



ABOUT THE PROJECT

The ANTRACIT Žilina development project offers premises to be rented by your company for the purpose of using them as a warehouse, showroom, salesroom or as modern city logistics premises. ANTRACIT Žilina in Považský Chlmec, a borough of the City of Žilina, is located only 7 km from the centre of Žilina. The location offers quick access to the city's main bypass roads as well as excellent access to the D3 motorway.

VISUALS



AREA

The building has a total area of 1,700 m² and is suitable for smaller rental units with an area according to your needs. It has sufficient parking spaces for employees, as well as for customers.

This area, which is also suitable for civic amenities, can be used for catering/restaurant facilities, commercial facilities covering the strong catchment area of the City of Žilina. At the same time, the building is in close proximity to and has very good visibility from the main road.